



CrownCore™

Wall and Ceiling Panel

Thank you for your purchase of CrownCore™ wall and ceiling panels. This product is intended to clad walls and ceilings, providing a unified and finished look.

This instruction sheet will go over how to install this product on it's own, along with being installed in conjunction with CrownWall® slatwall panels.

For any questions please contact:
service@crownwall.com or 1-866-291-6982

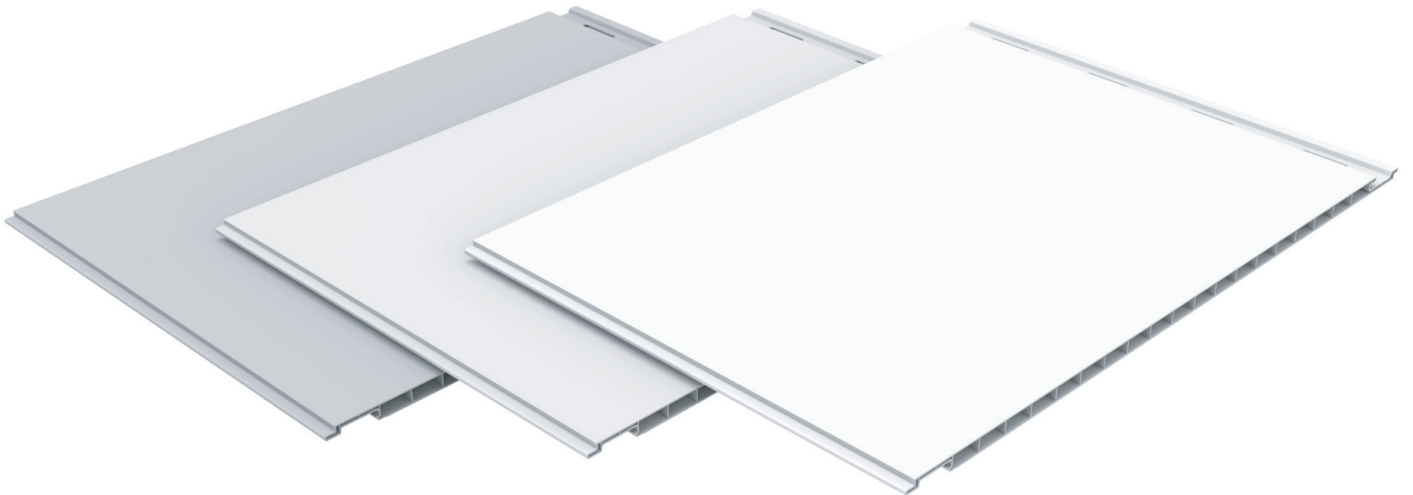


Table of Contents

Safety Information	-----	i
CrownCore™ Identification/Tools required	-----	1
Installation	-----	2-3
Installation with CrownWall®	-----	4-5
Special Considerations	-----	6
Warranty Information	-----	7
Liability Disclaimer	-----	8

Safety Information



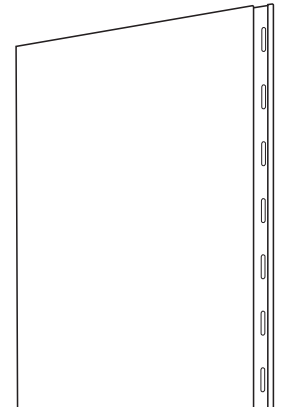
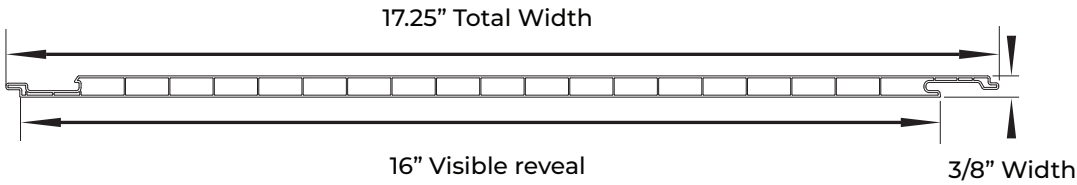
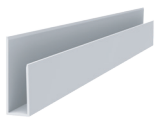
It is recommended to not install this product alone. A two person team is suggested.



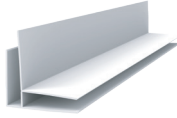
It is the responsibility of the installer to ensure that the surface(s) to which the slatwall panels are being installed onto are of a sufficient structural integrity to allow for the panels to be screwed into.



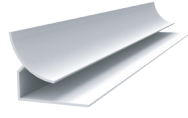
Panels must be installed on vertical wall studs spaced at 16" apart

The Panel

Available Trims


J-Trim
Used for finishing around the edges of the panels



F-Trim
Used for finishing inside and outside corners



Cove Trim
Used for finishing inside corners



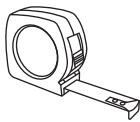
H-Trim
2 Piece design allows for connecting panel sections



Transition Trim
2 Piece design used to transition from CrownCore™ to CrownWall®



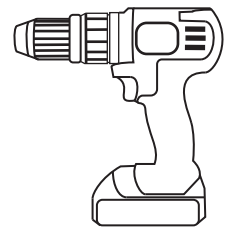
Cable Trim
2 Piece design used to conceal wires.

Tools Required for Installation


Measuring Tape



Stud Finder



Drill



Pencil



Level

Tools To Cut Panels and Trims

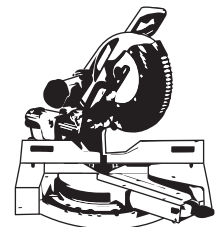

Scissors/Snips



Oscillating Saw



Jig Saw



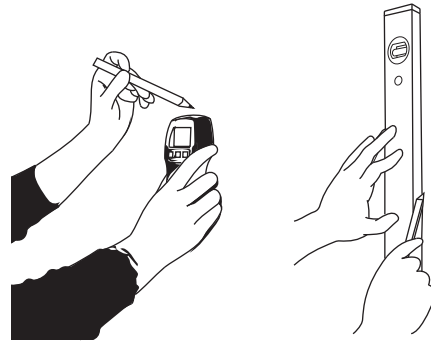
Miter Saw

Step 1

Using a stud finder, locate and mark all studs on the desired wall. Studs should be centered 16" apart. This is important as you will need to screw each panel into each stud along the wall.

The CrownCore™ panels are spaced 16" apart, however it is important to find any inconsistent stud spacing.

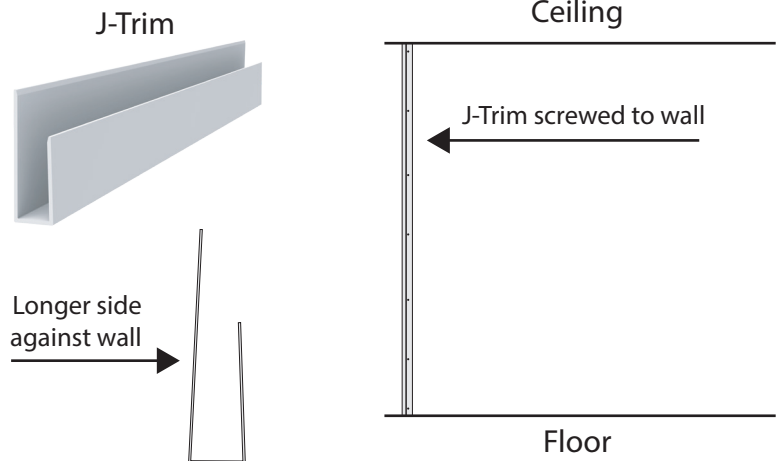
Also determine how high up the wall you want CrownCore™ panels to reach. Such as to the ceiling, or half way up the wall for instance.



Step 2

Cut the panels to the desired height.

Installing the first panel: At the starting location, install a J-Trim (sold separately) into the wall using countersunk screws. The J-Trim should be cut to the same height as the panels being installed. Use a level to ensure that the J-Trim is vertically level.

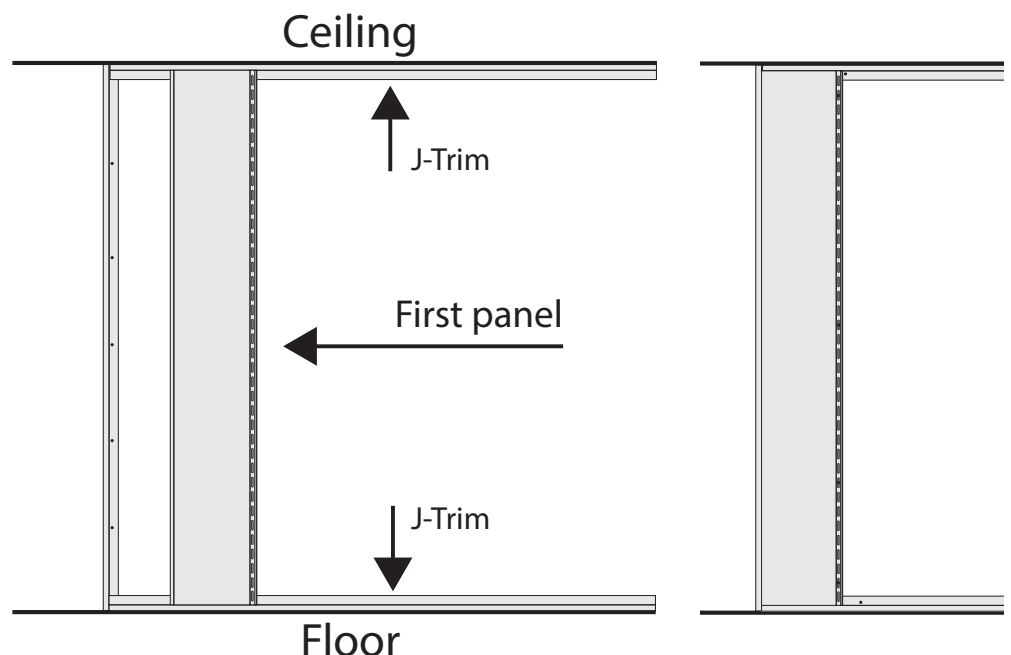


Step 3

Firmly place the first panel into the J-Trim. Insert J-trims at the bottom and the top of the panel. This will cap of the top and bottom ends of the panel.

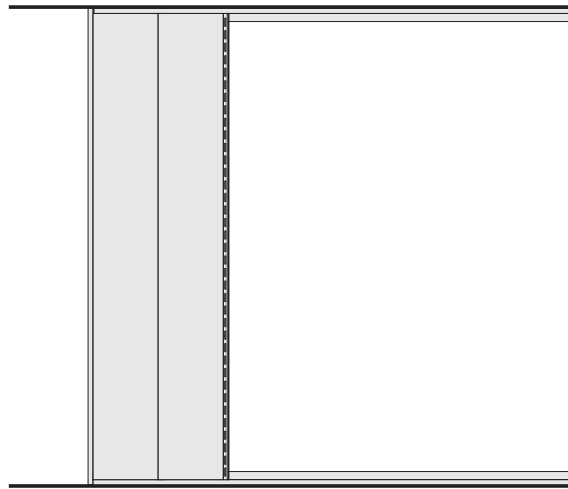
The holes on the panel should align with the stud location that you had previously marked.

If holes do not align, because the starting stud location is less than 16" from an adjacent wall for instance. Then you will need to cut/rip the length of the panel to the correct width.

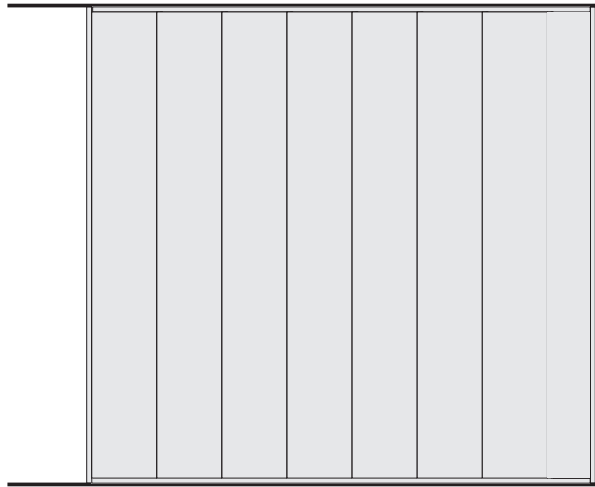
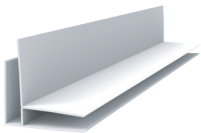


Step 4

Insert the next panel in place, ensuring that it is firmly pressed into the already installed panel and inside of the J-Trims. Screw this panel in place. Please note that you do not need to screw into every hole along the panel. Screwing into the top most hole, and the bottom most hole, and in 24" intervals in between is sufficient.

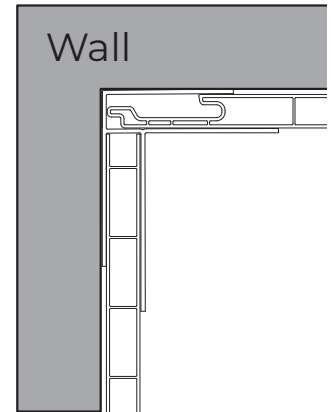
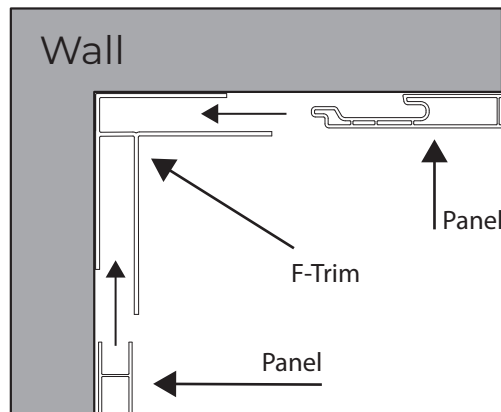

Step 5

Repeat this installation process until you have covered the desired area. In the case of a wall that has perpendicular walls on either side of it, you will most likely reach have to cut/rip the last panel down to the required width, which would remove the installation screw holes. In which case you will need to cap of the end with a J-Trim, and glue the panel to the wall using either PL glue, silicone, or any other similar adhesive.


Installing around a corner


When installing around an inside or outside corner, use the F-Trim (sold separately).

The F-Trim will retain the last panel in the wall assembly, and serve as the starting trim for the next perpendicular wall.

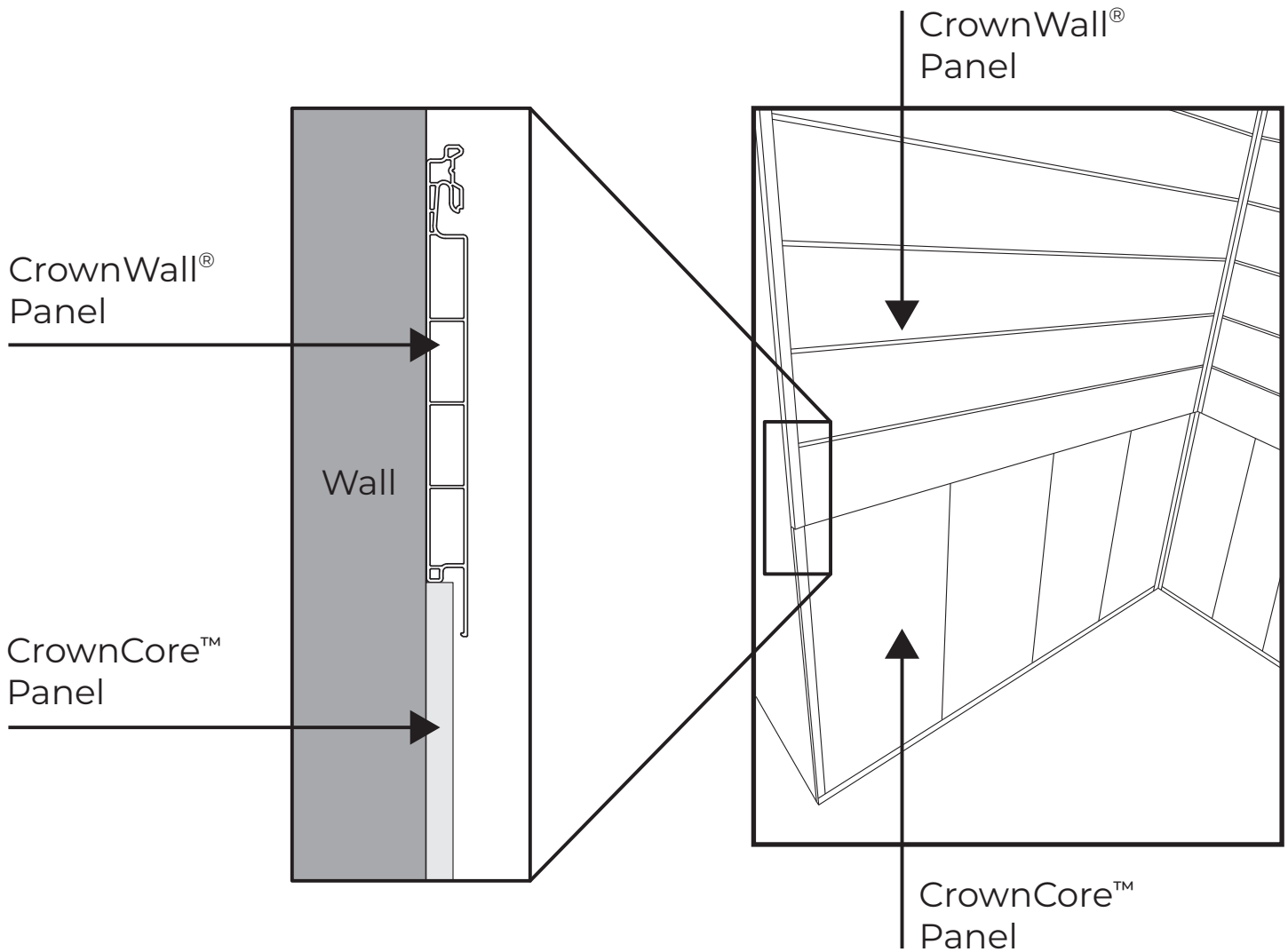


Installing CrownCore™ with CrownWall® Slatwall

In the event that you want to have an area of the CrownCore™ panels for usable storage, you can easily combine it with CrownWall® slatwall panels. There are two ways of going about this.

1 - CrownCore™ Installed below CrownWall®

In the event that it is desired to only partially cover a wall with CrownCore™ flat panels, it can easily be done by first installing the CrownCore™ panels at the desired height, then installing the CrownWall® panels directly above it.

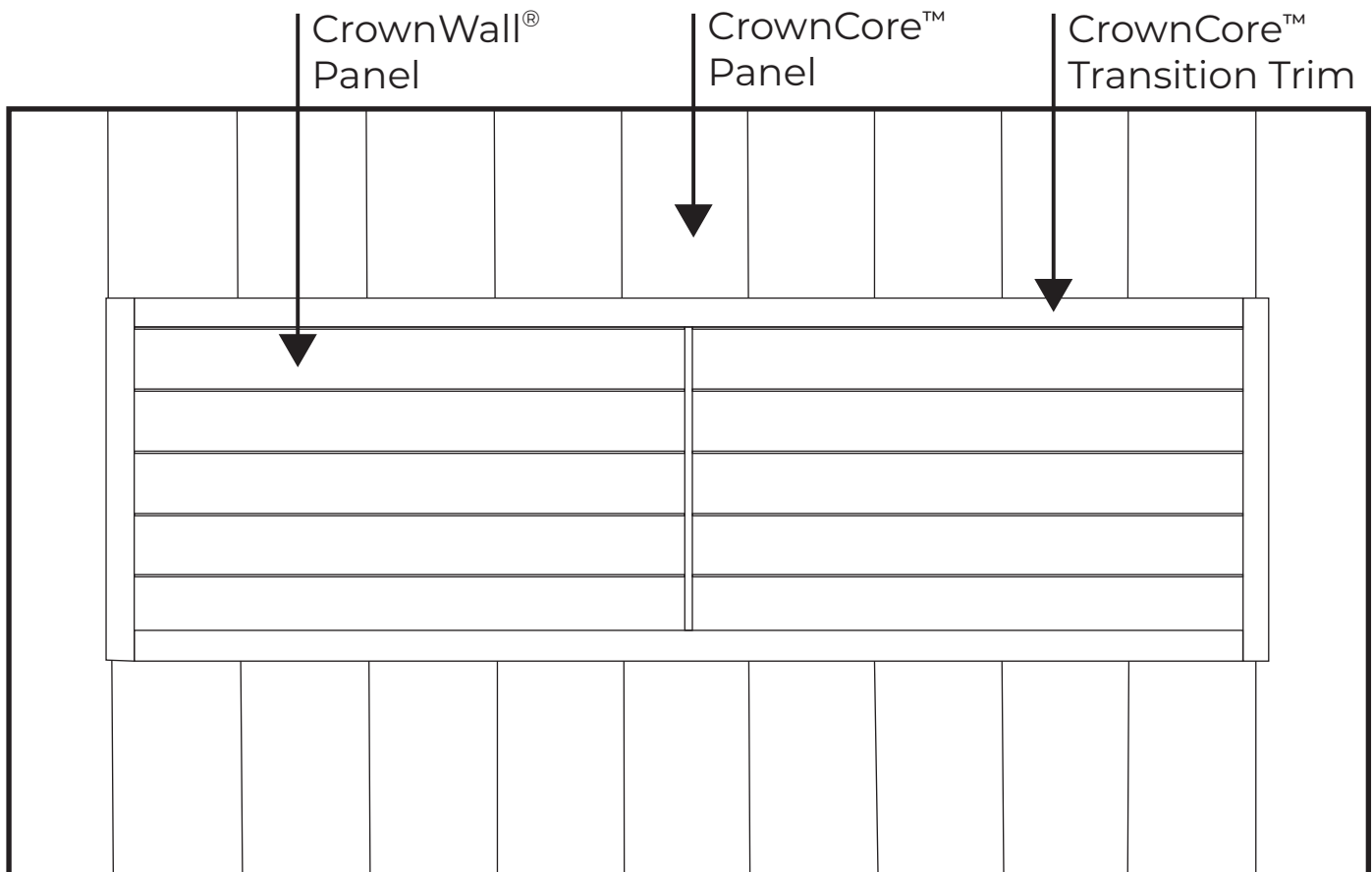


2 - CrownCore™ Surrounding CrownWall®

CrownCore and CrownWall panels can be installed together on the same wall using the Transition trim (sold separately).

The transition trim is a 2 part trim, consisting of a backing, and of a front. The backing must be installed first behind the CrownWall® before installing the CrownCore™ panels.

- 1) Using an 8' x 4' section as an example, Install the panel section as per normal procedure, however instead of using the J-Trim, use the backing of the Transition Trim. Ensure that it goes around all 4 sides of the CrownWall section.
- 2) Once the panel section and the transition trim backing have been installed, Install CrownCore™ panels around this section, cutting the CrownCore™ panels as needed.
- 3) Once all panels are installed, snap in the front of the Transition trim around the panel kit. This will finish the install of combining CrownCore™ panels with CrownWall® slatwall panels.



Installing on the Ceiling

CrownCore™ Panels can be installed onto the ceiling using the same procedure as installing on the wall. Ceiling installs are a 2 person task, for the sake of safety, do not attempt ceiling installs on your own, as you will be lifting the panels over your head.

Concrete or Cinder Block Installation

To fasten CrownCore™ Panels directly to concrete or cinder blocks:

- Predrill holes with a bit designated for concrete
- Do not drill into brick joints and grout lines as these are weak points
- Fasten CrownWall™ Panels with minimum 2" (5 cm) flathead #8 concrete screws (not included), while following the same installation steps as with conventional wall studs.
- A minimum of 1" concrete embedding must be achieved.

Cleaning and Maintenance

CrownCore™ panels and trims are made from a hard and water resistant material. They can be washed with a hose or power washer using low pressure and wiped down with a damp cloth or rag. Do not use any abrasive scrubbing sponges or other such methods to clean the panels and trims.

Warranty Information

The information provided here details the Garage Royalty Products Inc. warranty for all new CrownCore™ panels and trims that are purchased in North America (anywhere in North America). This Lifetime Limited Warranty extends only to the first retail purchaser of the CrownCore™ slatwall panel.

Lifetime Limited Warranty

Garage Royalty Products Inc. (Hereafter CrownCore™) warrants its slatwall panels against defects in material or construction for the period of a limited lifetime. Any defective panels or trims will be replaced by CrownCore™ under the condition that the panels or trims in question were; - (A) Installed according to the relevant and printed instructions; - (B) Maintained as per the relevant and printed instructions; - (C) Installation followed any relevant local building codes. Any CrownCore™ panel replaced under the terms of this Lifetime Limited Warranty will inherit the remaining warranty period from the original purchase. Replacement of a defective product is the sole and exclusive remedy under the Lifetime Limited Warranty.

Lifetime Limited Warranty Exclusions

The following items are not covered by the CrownCore™ Lifetime Limited Warranty:

- Damage caused by improper installation, abuse, or misuse of CrownCore™ panels or trims.
- Damage caused by fire or accidents.
- Damage caused by accessories that are not CrownCore™. Including but not limited to: hooks, baskets, and shelving.
- The cost of all labor associated with installation.
- The cost of accessory materials.
- The cost of return shipping for defective panels, trims, accessories, or any other products associated with the line of CrownCore™ products.

Limitations of Warranty

The above Lifetime Limited Warranty is the exclusive warranty for CrownCore™ panels and trims. CrownCore™ disclaims all other warranties, express or implied, including any implied warranties of merchantability, fitness for a particular purpose, or otherwise. If you live in an area where consumer law prohibits this disclaimer, the above Lifetime Limited Warranty will not extend the time period of any such implied warranty. Obtaining Lifetime Limited Warranty Service. For warranty service, call 1-866-291-6982. You will need your original proof of purchase and photos to illustrate the claimed defect.

Liability Disclaimer

Garage Royalty Products inc., its successors, distributors, and dealers (hereafter SELLER) shall not in any way take responsibility for the proper use, installation, or service of the CrownCore™ product. The SELLER will assume no responsibility or liability for any case of improper installation or other misuse of CrownCore™ products. ALL LIABILITY CLAIMS ARE HEREBY WAIVED BY THE BUYER. The installer has the responsibility of ensuring that they understand the procedures of proper installation for CrownCore™ products. Any doubts should be resolved by contacting the manufacturer. Please understand that the assembly instructions and other assembly guidelines can not cover every assembly or installation scenario that may present itself. As every installation situation may have it's unique attributes, it is ultimately the responsibility of the final installer to understand and plan accordingly to ensure that the CrownCore™ products are installed correctly. It is the sole responsibility of the purchaser and final installer to ensure that the installation of CrownCore™ panels and trims meet any local building codes. It is recommended that all plans are professionally reviewed by a licensed engineer, architect or building official before installation of CrownCore™ products commences. The SELLER does not claim any liability for injury or damages caused by incorrect or improper use or installation of the CrownCore™ products. The BUYER acknowledges and agrees that the disclaimer of any liability for personal injury is a valid term of agreement, and the BUYER agrees to indemnify the SELLER and to hold the seller as not responsible for any claim related to CrownCore™ products. Under no circumstances will the SELLER have any liability for any damages or expenses by reason, use, or sale of the CrownCore™ product.

Consequential Damages

The SELLER shall not be liable to the other parties for any and all special, indirect, incidental, or consequential damages resulting from the use of the product.

Severability

If any provisions of this Lifetime Limited Warranty is held to be invalid, illegal, or unenforceable, the balance of this Lifetime Limited Warranty shall remain in effect.



Questions or missing parts? Contact our customer service department at service@crowwall.com or 1-866-291-6982

CrownCore™ Customer service hours 8:00 am - 5:00 pm EST Monday - Friday

Thank you again for putting your trust in CrownCore™!